



High Definition Preamp Processor

Display Firmware Upgrade June 2020

Version 30-00

DISCLAIMER AND LIMITATION OF LIABILITY

DEQX Pty. Ltd. ('DEQX') assumes no responsibility for loss or damage resulting from the use of any of its products.

(See the **DEQX User Manual** for the full text of this disclaimer.)

1. APPLICABILITY AND REQUIREMENTS

This firmware upgrade applies to the following DEQX processors:

- PreMATE Plus (PreMate+)
- HDP-5

Before performing this upgrade, ensure that your DEQX is running DSP firmware 201.61.13 by checking the version in DEQX-Cal. For more information, see the Firmware Upgrades section of the DEQX Support page:

- <https://www.deqx.com/support/>

To perform the display firmware upgrade, you will need a microSD card. The recommended size is **16 GB**. (Larger is OK but is unnecessary.)

You will also need some simple tools: a 2mm hex driver and a #2 PoziDriv or Philips screwdriver.

2. NEW FEATURES

The firmware upgrade includes a new color scheme and various stability enhancements. It also adds a **Shutdown** button to the **Settings** screen, which cleanly shuts down the display processor.



If you need to remove mains power, use the **Shutdown** button to cleanly shut down the display processor. When the screen goes blank, turn off mains power with the rear panel switch. In normal use, leave the rear power switch on and use the Standby button on the remote control.

3. BURNING MICROSD CARD

Note 1: If you use different software than specified below to unzip the software or to burn the microSD card, the upgrade may not be successful. Please use the recommended software only.

Note 2: If you are unable to burn a microSD Card, contact DEQX Support to request a pre-burnt card.

Note 3: The recommended size of microSD card is 16 GB. (Larger is OK but is unnecessary.)

1. Download and install 7-Zip: <https://www.7-zip.org/download.html>
2. Download and install Win32 Disk Imager: <https://sourceforge.net/projects/win32diskimager/>

(Note: you must download with a Windows computer to get the Windows installer.)

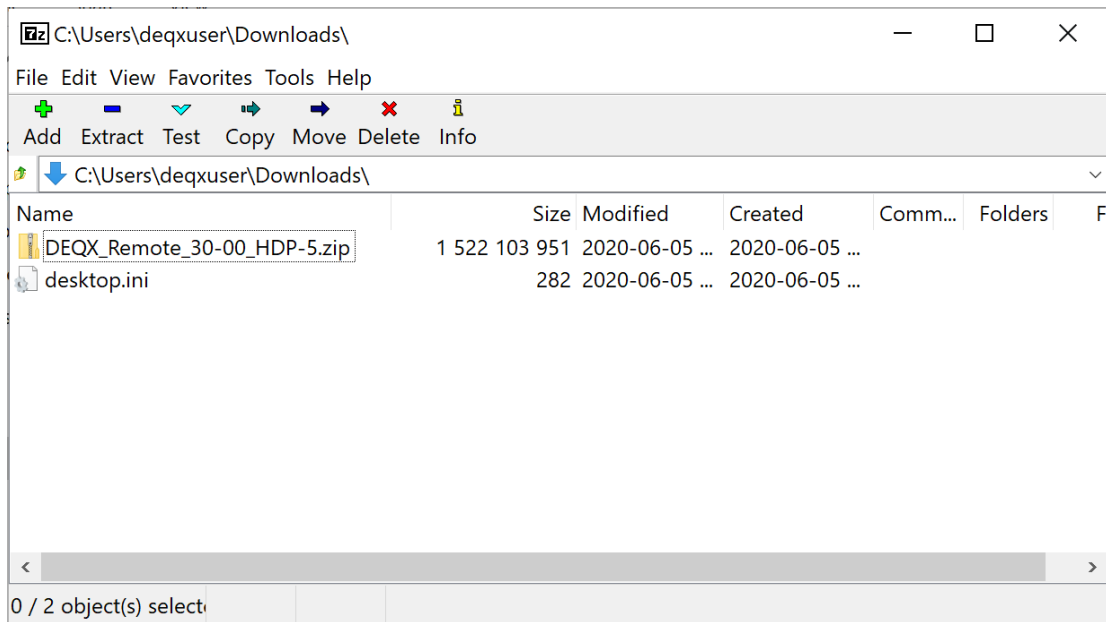
3. Download the correct firmware for your processor using the links in Table 1.

Table 1. Firmware upgrade file for each DEQX model

DEQX Model	Name of firmware upgrade file
PreMate Plus	DEQX Remote 30-00 Premate Plus.zip
HDP-5	DEQX Remote 30-00 HDP-5.zip

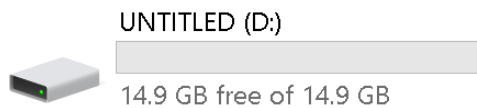
(If you have difficulty with the embedded links in the table, use the links on the DEQX Support page: <https://www.deqx.com/support/#firmware-upgrade> .)

1. Start 7-Zip. Select the downloaded file and click Extract. The unzipped file will have the name **DEQX_Remote_30-00_Premate_Plus.img** or **DEQX_Remote_30-00_HDP-5.img**.

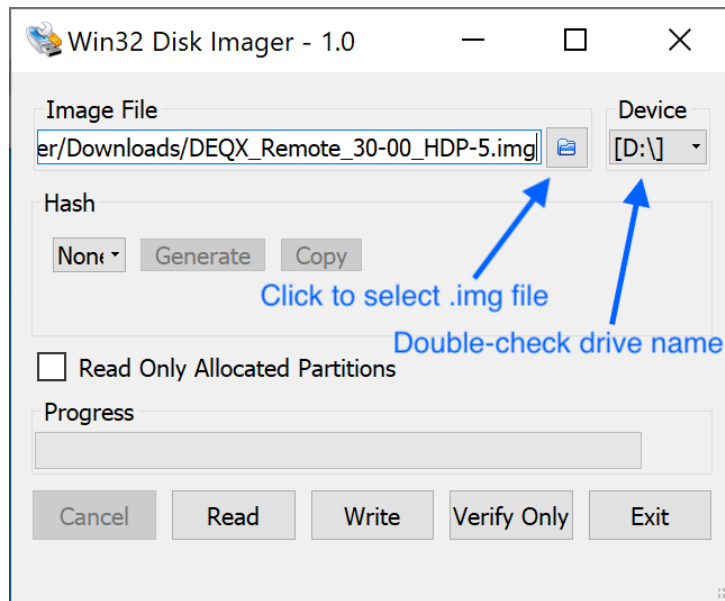


Ensure that you use 7-Zip to unzip the download. If you use a different unzip program, the upgrade may fail. If you contact DEQX support about a failed upgrade, the first thing we will ask you is if you used 7-Zip to unzip the file.

2. Connect the microSD card to your computer. Some computers have a slot to take a microSD card directly. Otherwise, you can use a microSD to SD card adapter, or a USB-connected card reader.
3. Check the drive name of the inserted card in the Windows File Explorer. In this example, it is drive **D:**.

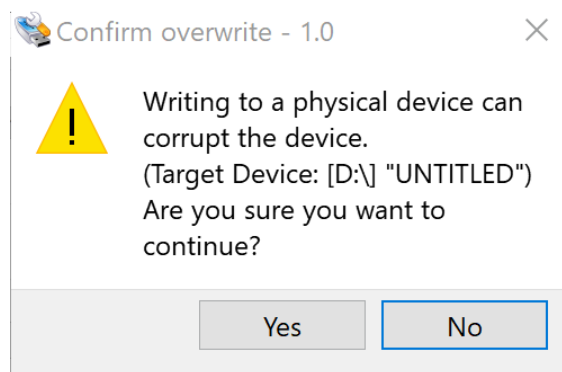


4. Open Win 32 Disk Imager. Click on the folder icon indicated in the screenshot below and select the unzipped file. Note that the file name must end in **.img**.



Ensure that you use Win32 Disk Imager to burn the SD card. If you use a different program, the upgrade may fail. If you contact DEQX support about a failed upgrade, the second thing we will ask you is if you used Win32 Disk Imager to burn the SD card.

5. Check that the drive selected for burning is the SD card that you inserted above (**D:** in this example). **Check this very carefully.**
6. Click the Write button. You will receive a confirmation dialog.



7. Click Yes. It will take several minutes to burn the software to the card. When it completes, eject the drive from the computer using the Windows "Safely Remove Hardware and Eject Media" function, then physically remove the card.

4. UPGRADE PROCEDURE

8. **Power off the DEQX with the rear panel switch. Unplug the power cord.**
9. Remove the top cover (14 x 2mm hex screws).
10. Remove the four screws holding the power supply and display processor sub-assembly to the chassis. These screws are the large screws (PoziDriv or Philips #2) shown in Photo 1. Be sure to remove the lock-washer for each screw as well.

Note: the screws to remove are the four large screws indicated in the photo, not the smaller black screws near them (only partially visible in the photo).

11. *Gently* lift up the sub-assembly on the side closest to the front panel of the DEQX. While doing this, you can move the sub-assembly to the rear a few centimeters to ease access. Be careful not to strain any cabling.

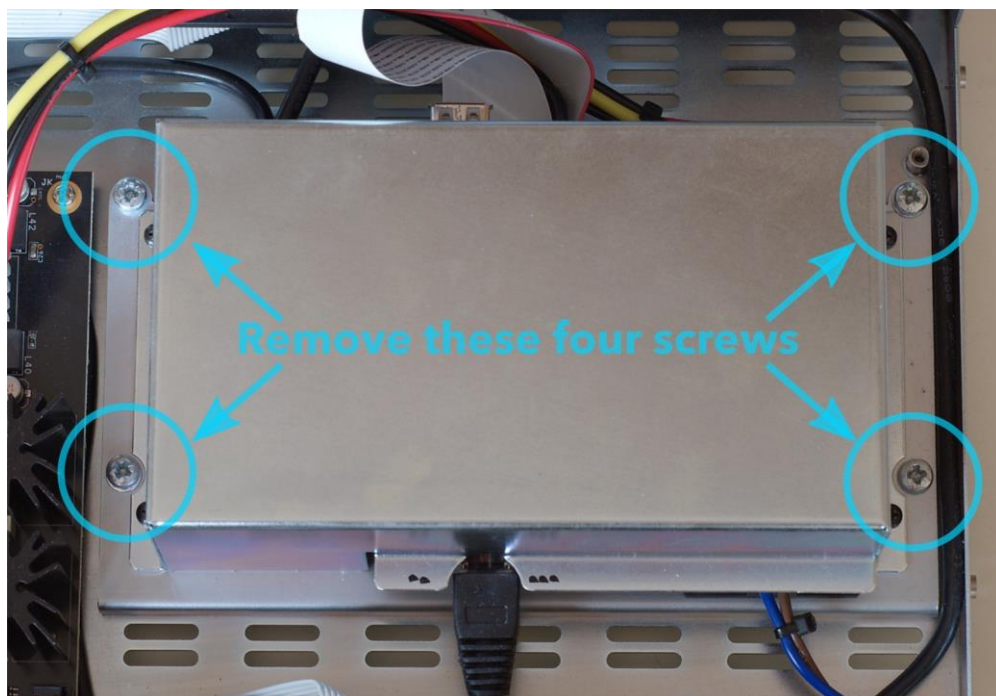


Photo 1. Screws holding the power supply and display processor sub-assembly

12. Locate the slot for the microSD card. Carefully insert the microSD card with the copper connectors down, as shown in Photo 2.
13. Gently push the microSD card into the slot until it latches in place. This is shown in Photo 3.

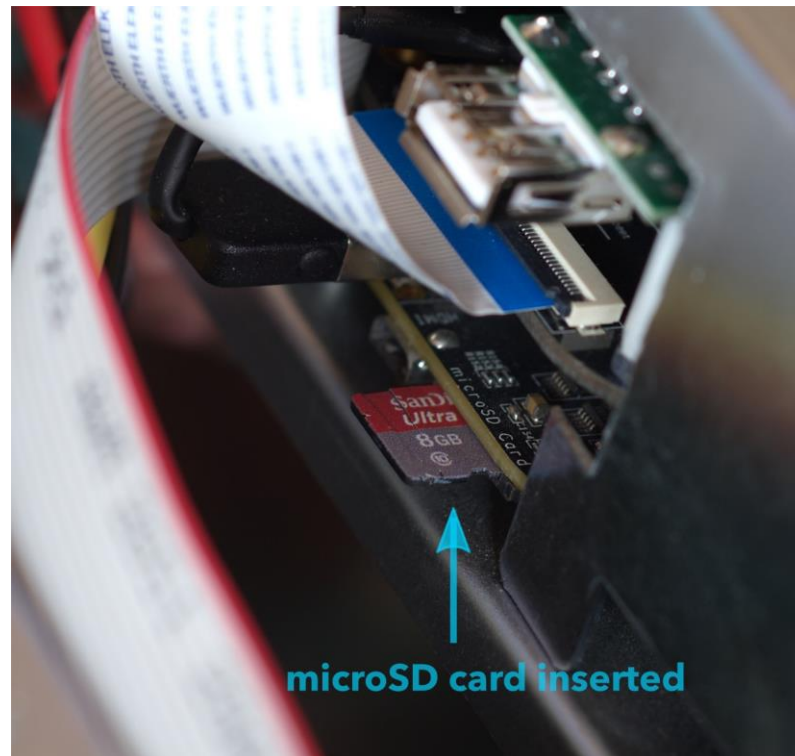


Photo 2. microSD card inserted

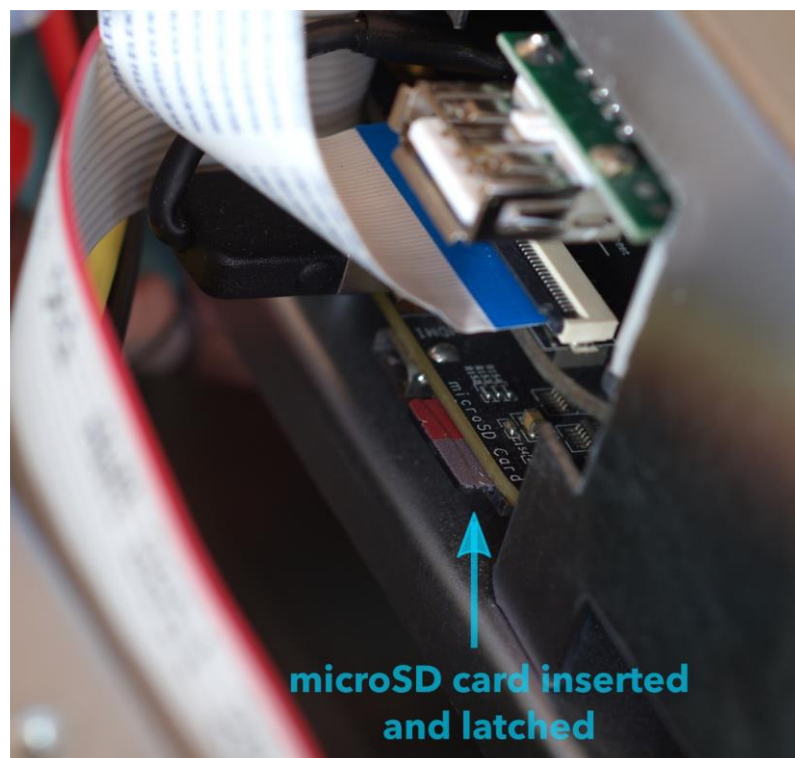


Photo 3. microSD card inserted and latched

14. Reposition the sub-assembly in its original position and re-attach it with the four screws. Ensure that each one has its lock washer. *Make sure that the screws and lock-washers are fastened before proceeding, as the screws electrically ground the sub-assembly to the chassis.*
15. Replace the top cover and secure it with 14 x 2mm hex screws.
16. Connect the power cord and power on the DEOX with the rear panel switch. The DEOX will take up to a minute before the display screen turns on.
17. Check the firmware version on the Settings screen (Photo 4). It should read **0.30.00**.
18. Proceed to use your DEOX as normal. **See page 3 for updated features and important notes.**

Note: The microSD card must remain inside the DEOX. If you have previously performed a display firmware upgrade, note that this is different to the earlier procedure. **Do not remove the microSD card from the DEOX processor.**



Photo 4. Display firmware version